

An aerial photograph of a vast, densely populated city, likely in Asia, characterized by a high concentration of tall, multi-story buildings. The city is partially shrouded in a layer of low-lying, white clouds or fog, which adds a sense of depth and atmosphere to the scene. The sky above is a clear, pale blue.

BS67000 – A standard for City Resilience

Caroline Field,
Committee Chair BS 67000
Associate Director, Arup

ISO Definition of Resilience



Shocks

Stresses

"The **ability** to **absorb** and **adapt** in a **changing** environment"

BS67000 City Resilience Guide

- Developed by diverse group: consultants, cities, cabinet office, 100RC, infrastructure providers, universities.
- Provides practical guidance and tools
- Builds on the growing portfolio of guidance
- Intended for use by all stakeholders who contribute to city resilience

The changing perspective of resilience.



Developing

- Shock response/recovery focus
- Reactive



Matured

- Mitigation & response
- Horizon Scanning
- Shocks & Stresses
- Prevention and sustainability



Pioneering

- Thriving not just surviving
- Resilience in the round
- Value and outcome based

Fundamentals



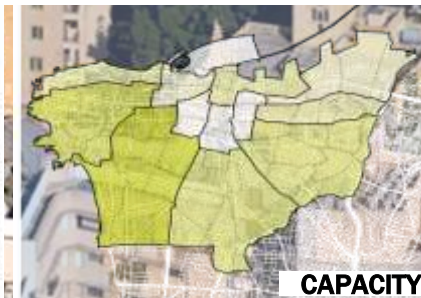
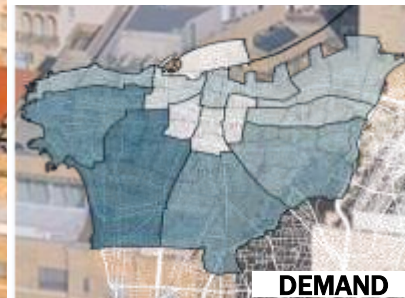
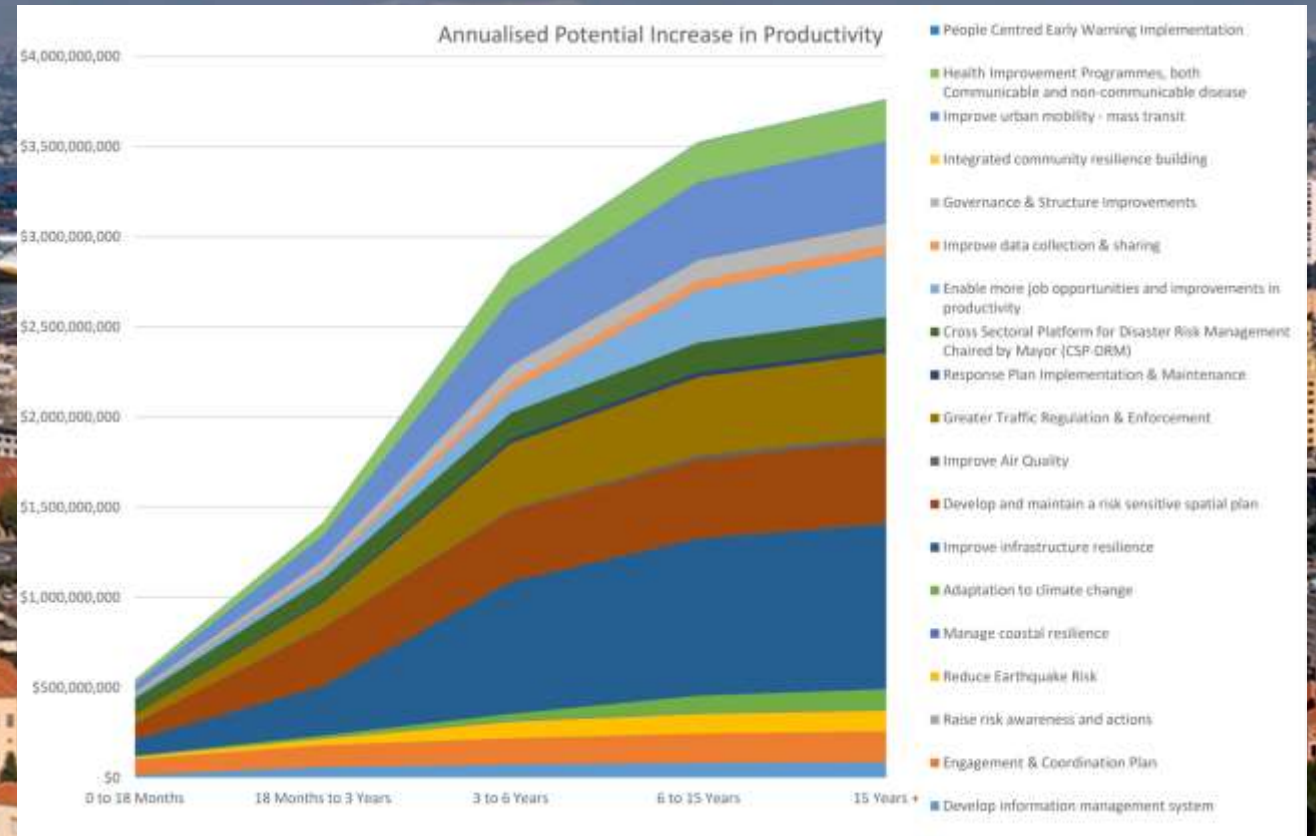
ADAPTIVE



DURABLE



INTEGRATED & INCLUSIVE

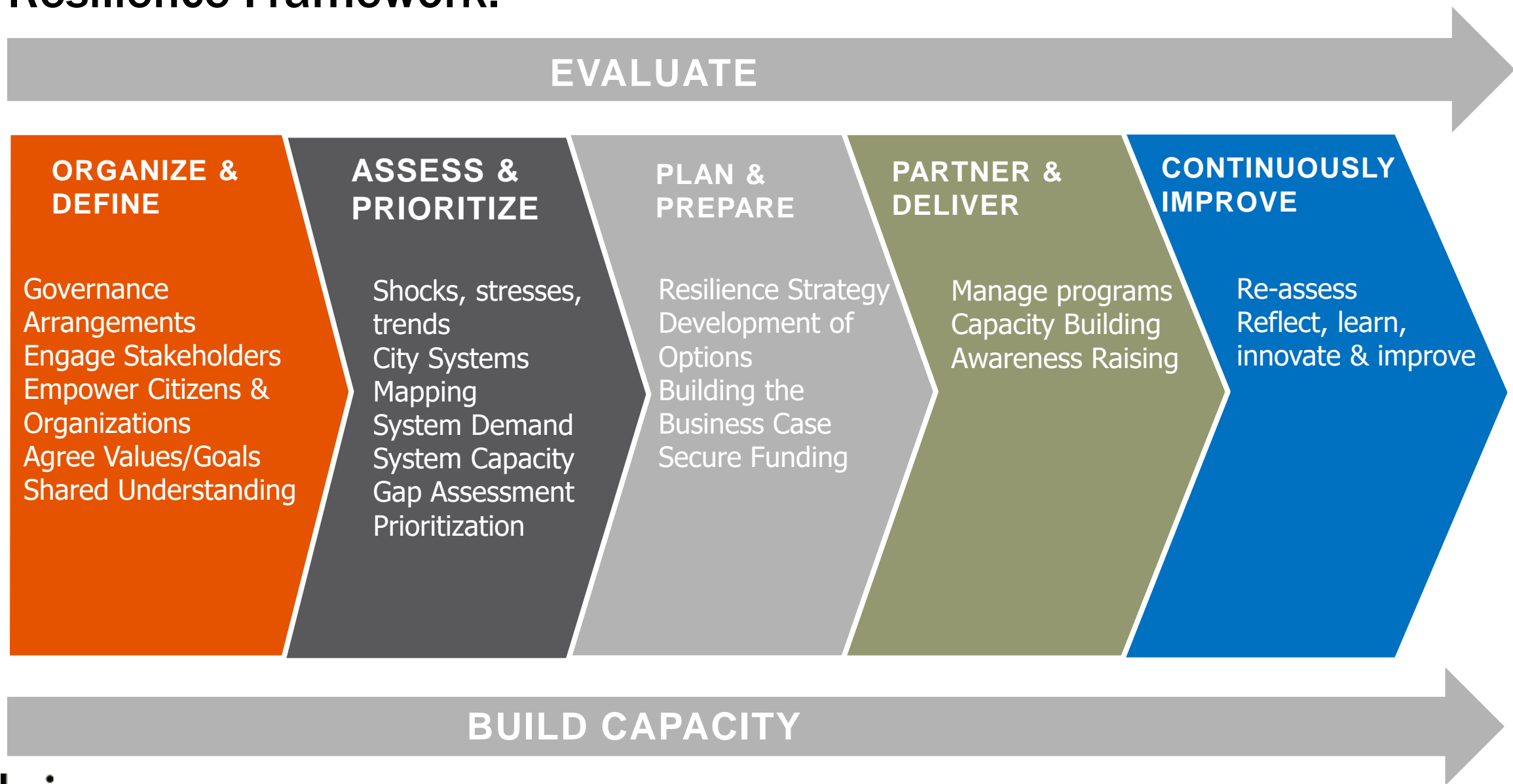


BEIRUT, LEBANON

REFLECTIVE



Resilience Framework.



Value & Systems Based Approach

System Demand

Technology

Societal

Natural

Health

Security



System Capacity

Integrated

Adaptive

Inclusive

Durable

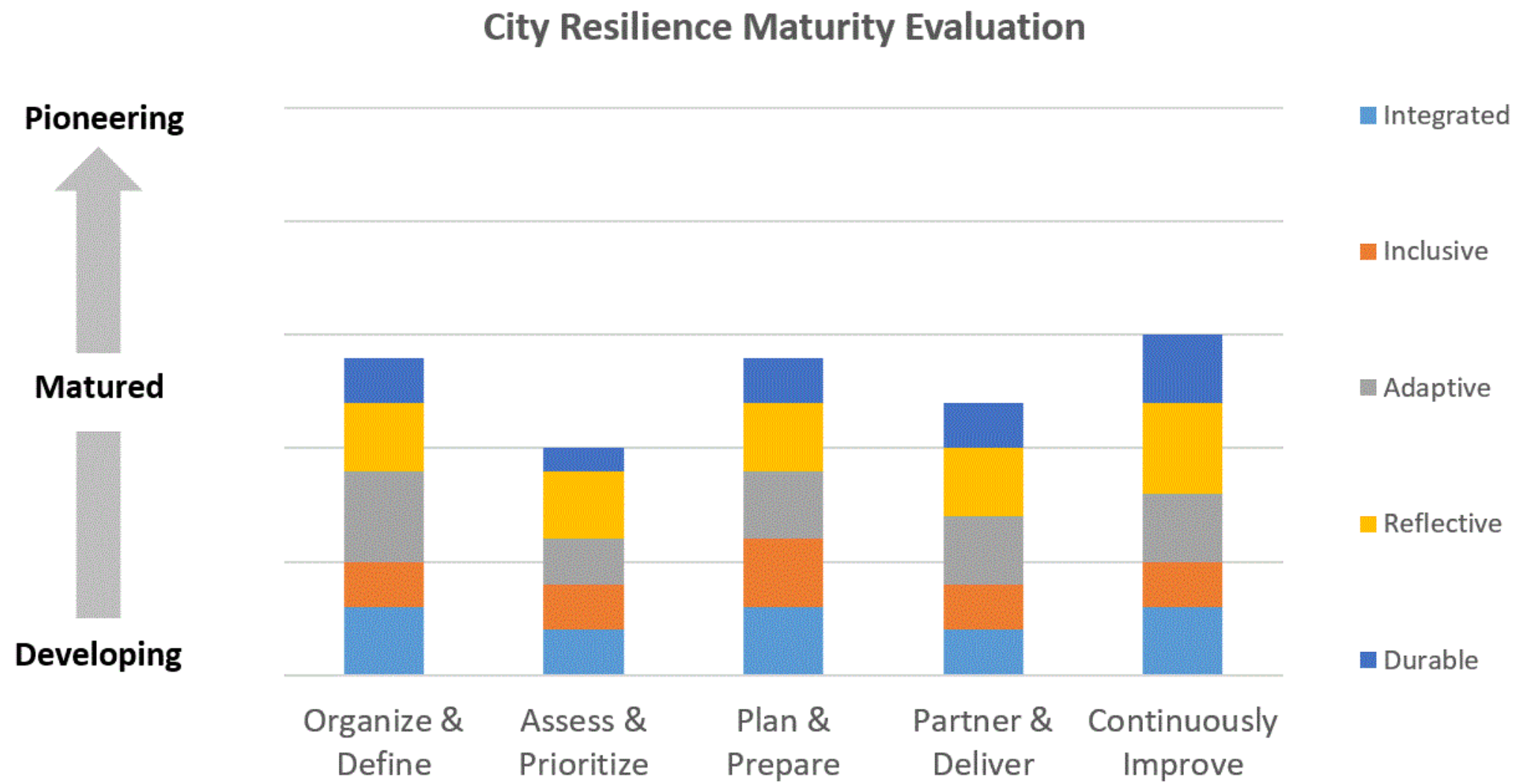
Reflective

Evaluation

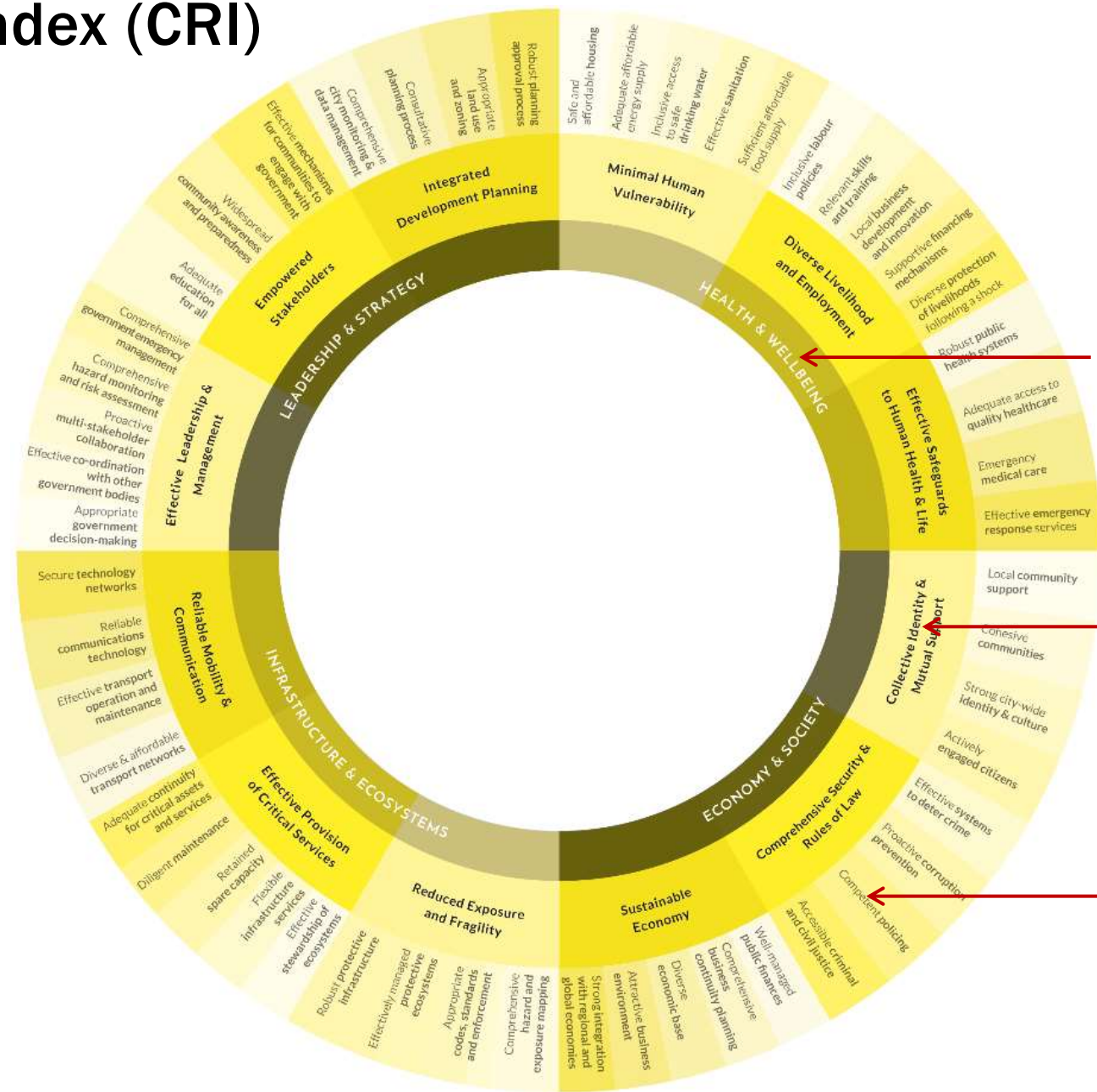
Table 1 (continued)

Framework	Integrated	Inclusive	Adaptive	Reflective	Durable
Stakeholder engagement	<p>Values are aligned and integrated between organizations, businesses, communities, government and citizens in the city.</p> <p>There is alignment and integration of policies, procedures and practices for organizations in the city.</p> <p>There are clear definitions of agreed roles, responsibilities and resource commitments.</p> <p>Roles, responsibilities and board level representation are defined and underpinned by appropriate governance arrangements and support.</p>	<p>There is a defined programme of stakeholder engagement that respects the needs of all groups in the city.</p> <p>Under-represented groups are identified and actively engaged.</p>	<p>There is a programme to actively seek to increase the tempo of change within the city and remove barriers.</p> <p>Causes of change resistance amongst those affected are acknowledged and actively managed through a strong change narrative and effective engagement.</p> <p>There is a clear agenda of investment in infrastructure that is flexible to needs.</p> <p>Flexibility is enabled across organizations through the adoption of flat structures and empowered teams.</p>	<p>The approach to stakeholder engagement builds on existing policies, initiatives and capacity.</p> <p>Learning happens between organizations, businesses, communities, government and citizens, sharing experience and knowledge.</p> <p>Strategic decisions concerning the city are open and transparent, with clear lines of accountability. This includes decisions to do nothing or postpone actions.</p>	<p>Resilience has a place in the city's strategic ambition, policy, budget/ resourcing plans, etc.</p> <p>Stakeholder mapping underpins a stakeholder engagement plan which is kept current.</p>
Vision and values	<p>Leadership from across sectors is aligned to a common vision and roadmap for a resilient future.</p> <p>Core city values are defined across sectors and communities, canvassing the views of a broad stakeholder base.</p>	<p>The city vision has been created in a way that is fully inclusive of all city groups and appropriate channels are used to communicate with all groups.</p> <p>Terms of reference and engagement are defined to ensure every part and aspect of the city is actively included.</p>	<p>The city vision is regularly reviewed in light of future scenarios, needs and changes in circumstance. The vision and values are people and outcome-focused, and strongly influenced by the need to create a resilience culture within the city.</p>	<p>The city vision is cognisant of what has gone before, taking full account of previous narratives (including history and heritage), efforts and learning.</p> <p>The history and stories important to the city are curated and linked to the city's core vision and values within relevant strategies.</p> <p>Existing measures that support a stable environment and economy are defined.</p>	<p>The city vision and agendas are reinforced by strong public mandates and take into account long-term projections.</p> <p>Leaders from across sectors act as champions to lead city resilience initiatives.</p>

Evaluation



City Resilience Index (CRI)



4 Dimensions

12 Goals

52 Indicators

Arup's Strategy Portfolio



March 2016



April 2016



September 2016



November 2016



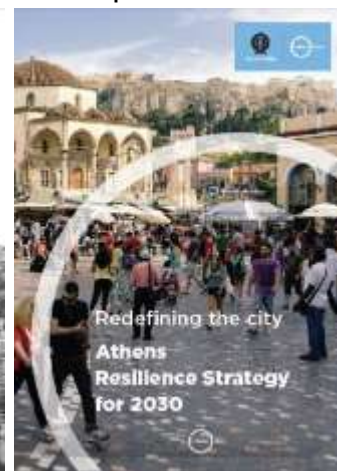
March 2017



March 2017



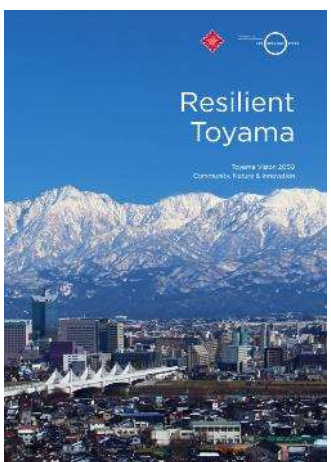
May 2017



June 2017



June 2017



July 2017



June 2018



September 2018



September 2018



Thank You!

Caroline.Field@arup.com

ARUP