



Planning for the future:

Insights from

FAO's City Region Food Systems Programme

Michela Carucci

City Region Food System Specialist

Food and Agriculture Organization of the United Nations

Resilient Cities Congress 2019

26 to 28 June

Bonn, Germany

With support from



Federal Ministry
of Food
and Agriculture

by decision of the
German Bundestag



FAO's Framework for Urban Food Systems



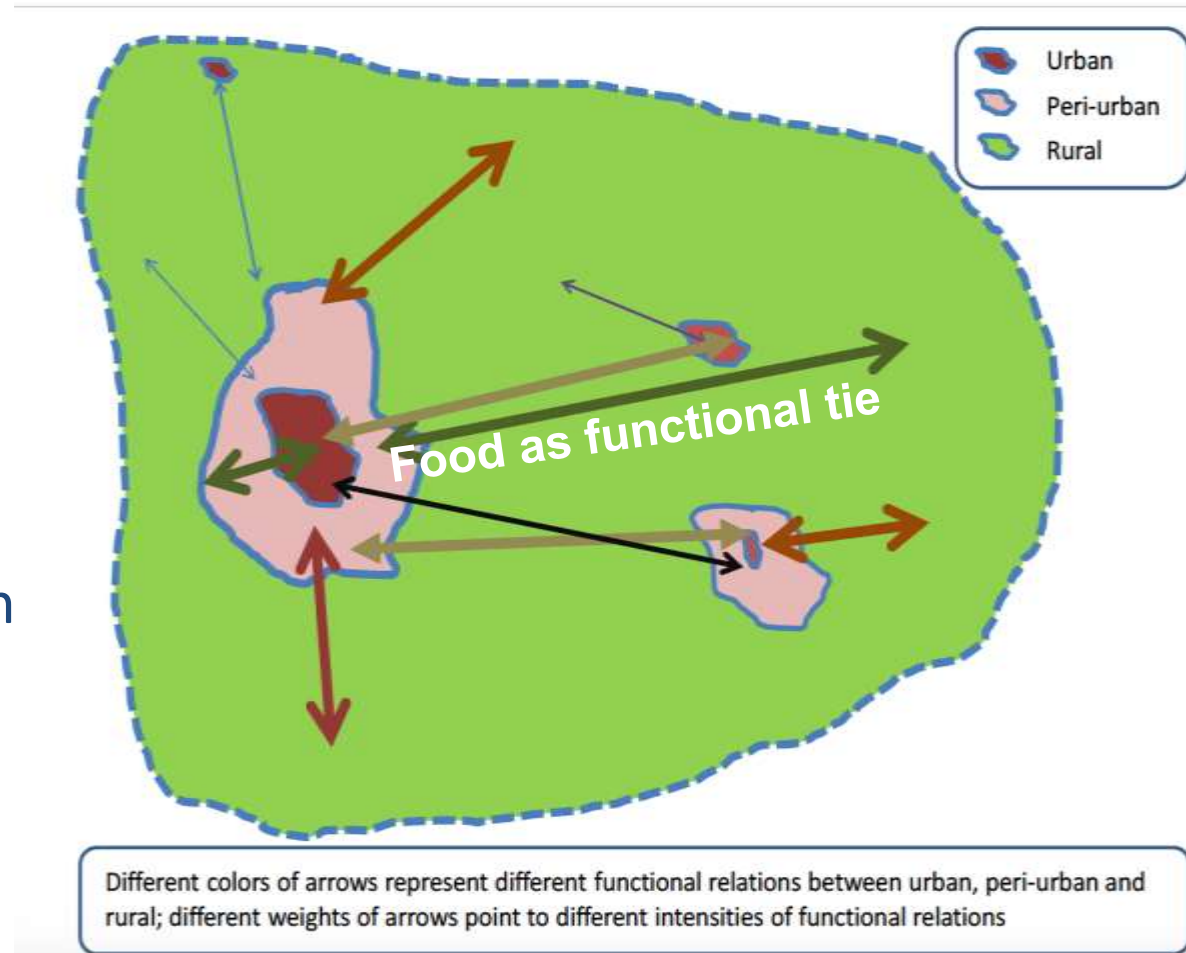
FAO's Programme on City Region Food Systems (CRFS)



**CRFS is a critical scale for promoting
urban-rural governance to transform
food systems towards *resilience and sustainability***

Pillars of CRFS

- **Territoriality**
context-specific
solutions “Looking
beyond city limits”
- **Multi sectoriality**
across the value chain
- **Inclusiveness**
of all stakeholders

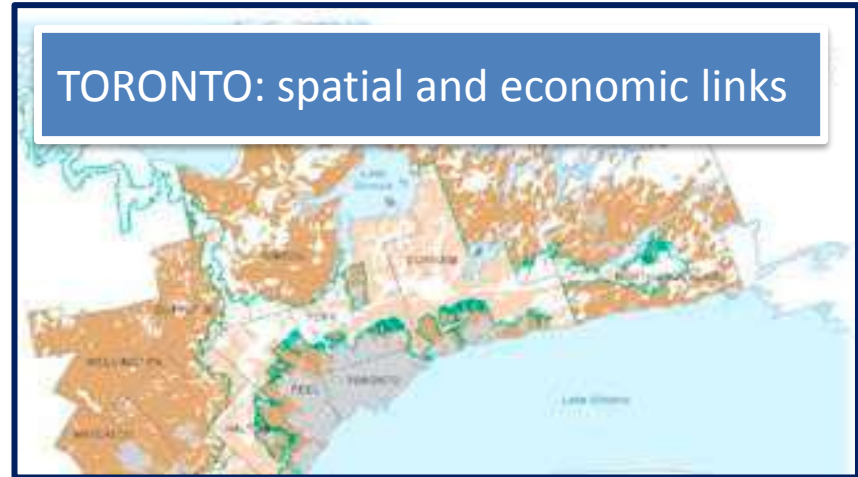


Example of characterization in pilot cities

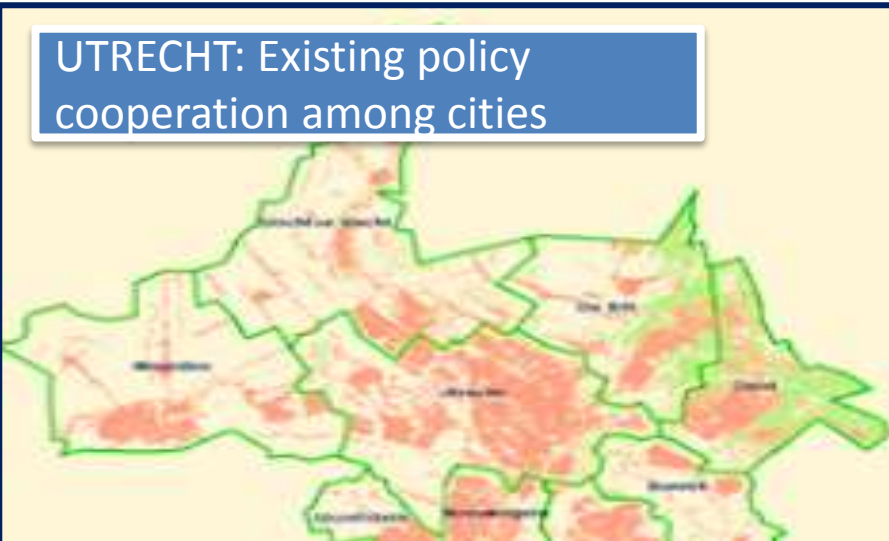
COLOMBO: Urban Growth Plans



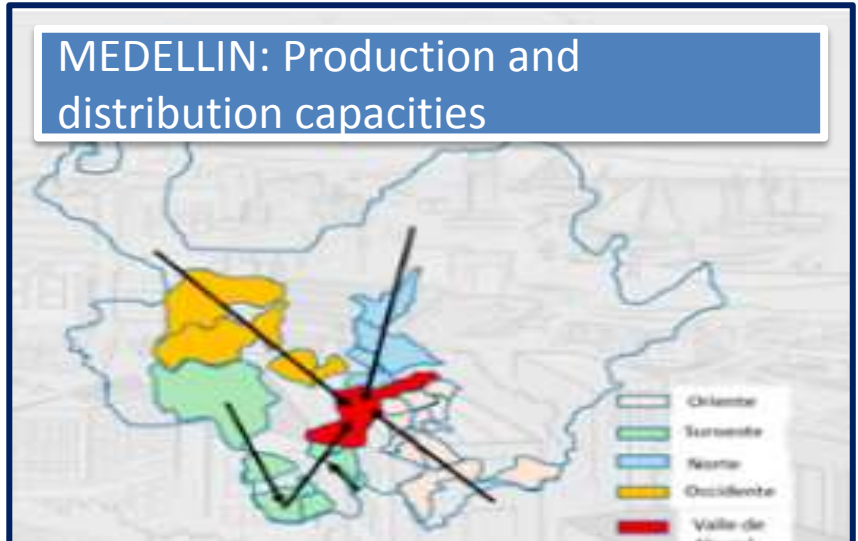
TORONTO: spatial and economic links



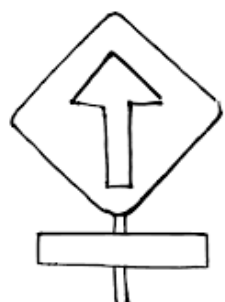
UTRECHT: Existing policy cooperation among cities



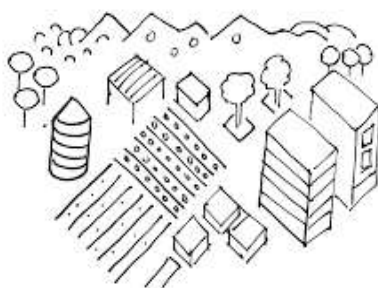
MEDELLIN: Production and distribution capacities



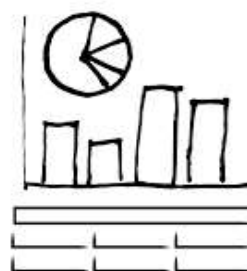
Methodological approach: *The CRFS Toolkit*



VISION



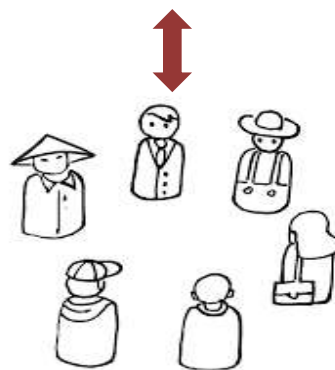
DEFINING THE CRFS



CRFS ASSESSMENT



POLICY SUPPORT AND PLANNING



GOVERNANCE



- 45 single tool/example
- 20+ external tools
- Insights from 7 cities

In collaboration with

RUAF FOUNDATION
resources centres in urban agriculture & food security

WILFRID LAURIER UNIVERSITY
LAURIER
Inspiring Lives.

<http://www.fao.org/in-action/food-for-cities-programme/toolkit>

Where to start?

Cities adopted different entry points



Results from pilot cities

URBAN AGRICULTURE: KEY ENTRY POINT FOR QUITO, ECUADOR

- Shift from a sectorial approach to one that is **systemic** and **inclusive**
- Quito multi-stakeholder platform adopted a **city region prospective: Promoting agriculture in and around the city**
- Connecting with other food and non-food sectors

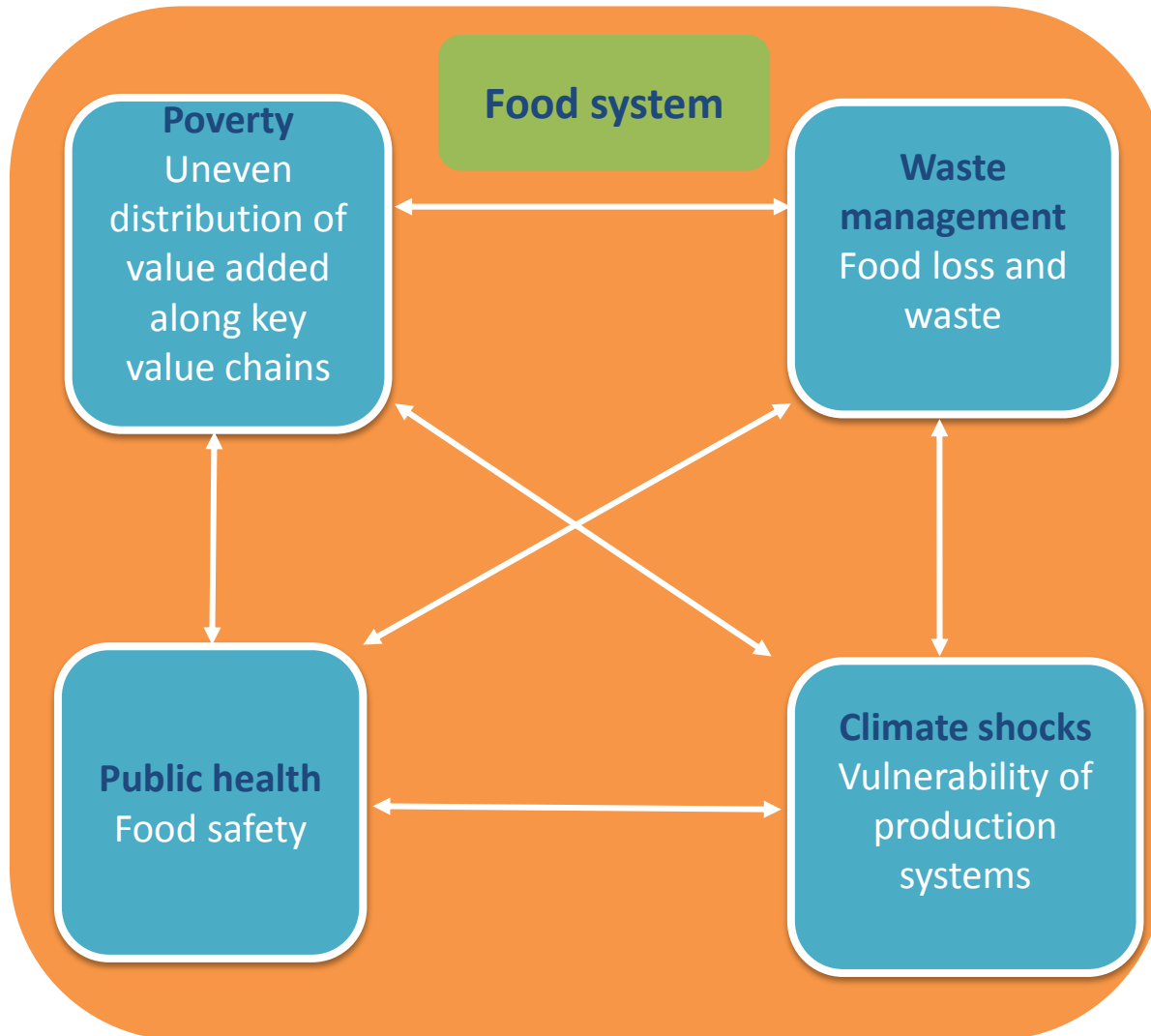


QUITO'S FOOD SYSTEM STRATEGY

<http://pactoagroalimentarioquito.com/estrategia-agroalimentaria/>

Results from pilot cities

FOOD WASTE: KEY ENTRY POINT FOR COLOMBO, SRI LANKA



Policy outcomes

- Shift from a sectorial to systemic approach
- **Food** is part of the planning process at provincial level (**Megapolis Master Plan**)
- New **council by-laws** covering on **food waste** and food safety
- **Interventions to reduce and recover food waste**

Results from pilot cities

URBAN FOOD SECURITY: KEY ENTRY POINT FOR MEDELLIN, COLOMBIA

Ciudad Región

Requiere para alimentar su población 1.824.413 Ton/Año



Policy outcome:

Urban-rural partnerships among cities within the Antioquia Region



- From urban food security to an Integrated territorial food strategy
- Establishing an inter-institutional platform “Alianza para el El Buen Vivir”

Lessons learnt from rural-urban governance for sustainable food systems

- Identifying a **clear entry point** to engage stakeholders
- Having a **shared vision**
- Finding **good champions**
- Having local government's **political buy in**
- Defining **clear roles** for all stakeholders
- **Not reinventing the wheel**

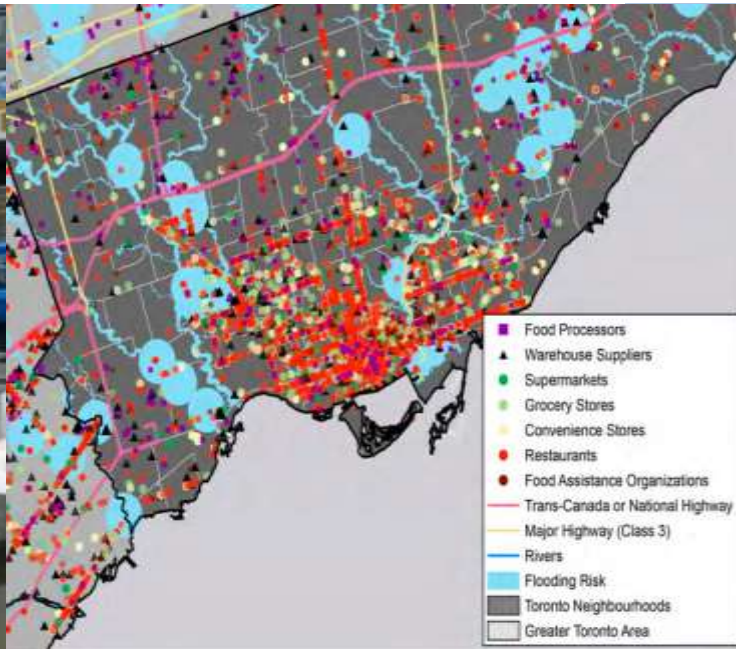
Governance is an evolving process!



Where are we now?

Integrating climate risks and vulnerabilities in the CRFS:

1. Definition/Characterization
2. Assessment
3. Planning
4. Intervention



Why focus on the resilience of food systems?

Cities are hotspots for climate change

- accounting for more than 70% GHG emissions and consuming 80% global food
- **Food sector is the 3rd largest contributor**
- At the same time, **cities are increasingly affected by climate shocks and stresses**

60% of the area expected to be urban by 2030 remains to be built

- Opportunity to build resilience

Floodings will affect **275 million people** worldwide should temperatures increase

But, no clear understanding of climate impacts on food system in city region contexts



Urban-Rural Governance for Resilience:



Within the *urban-rural continuum*, it is the capacity of public, private and community actors together to increase the capacity of food systems to survive, adapt, and thrive no matter what kind of chronic stresses and acute shocks they experience

Typology of interventions:

Different scales

- Information systems
- Early warning systems and EWEA
- Risk transfer mechanisms (social protection and insurance)
- Climate resilient good practices at farm level and along the value chain
- Risk driven policies, planning processes as well as governance
- Risk-sensitive investments at territorial level, especially Nature-based Solutions (NbS)
- Preparedness and emergency response
- Climate risk proof investments in grey infrastructure
- Knowledge management



Thank you!

Michela.Carucci@fao.org

FAO's Framework for the New Urban Food Agenda:

<http://www.fao.org/3/ca3151en/CA3151EN.pdf>

FAO's City Region Food Systems Project:

<http://www.fao.org/in-action/food-for-cities-programme>

FAO's City Region Food Systems Project – Publications:

<http://www.fao.org/in-action/food-for-cities-programme/resources>

Urban Food Action Platform:

<http://www.fao.org/urban-food-actions>

With support from



by decision of the
German Bundestag

