



Climate Adaptive Water Management through Rural-Urban Cooperation

Collaborative Climate Adaptive Water Management

- Increasing vulnerability of human and natural systems due to climate change
- 3 main challenges
 - Quantity – demand supply gap
 - Quality – ground water, surface water
 - Limited access and therefore conflicts
- Water transcends boundaries; **requires management action** at **multiple scales**, involving **multiple stakeholders** with competing needs.
- **Conflicts** between **sectors and users** (e.g. agriculture vs. domestic; residential vs. industrial; urban vs. rural)
- **Need to recognize coexistence and co-dependence** (rural and urban needs are connected through one or more functional linkages)

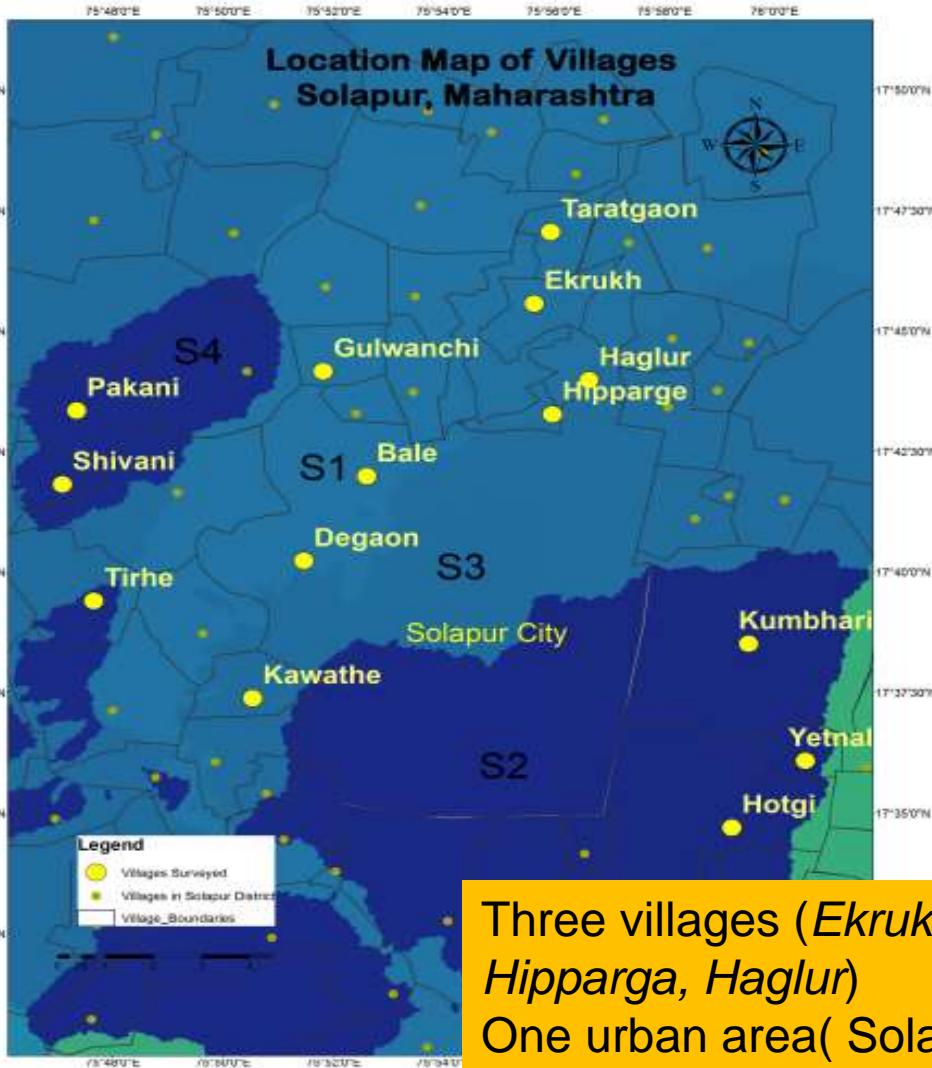
IAdapt Project

- Integrated Rural Urban Water Management for Climate based Adaptations in Indian Cities (IAdapt)
- Partners:
 - ICLEI South Asia
 - IWMI, Sri Lanka
 - Athena Infonomics, Chennai, India
 - IIT Madras, India



The IAdapt Framework is a framework that supports municipalities to develop integrated catchment level management plans for water resources, taking into account both urban and rural needs and expectations.

About Solapur



- Area: 14,845 km²
- Population (2011): 43.15 lakhs
- 11 sub-districts
- 1150 villages
- 1 Municipal Corporation
- 9 Municipal Councils

Three villages (*Ekrukh- Tartgaon, Hipparga, Haglur*)
One urban area(Solapur city)
4182.35 hectares



The RURBAN Platform

The Rural Urban (RURBAN) platform is an evolved and active cross-sectoral network to facilitate inter-agency collaboration and participatory decision making on water management. It consists of decision makers and practitioners from relevant government departments and citizens. This unique platform formulated under the project on IAdapt, bringing together the rural and urban stakeholders.

RURBAN Facilitates



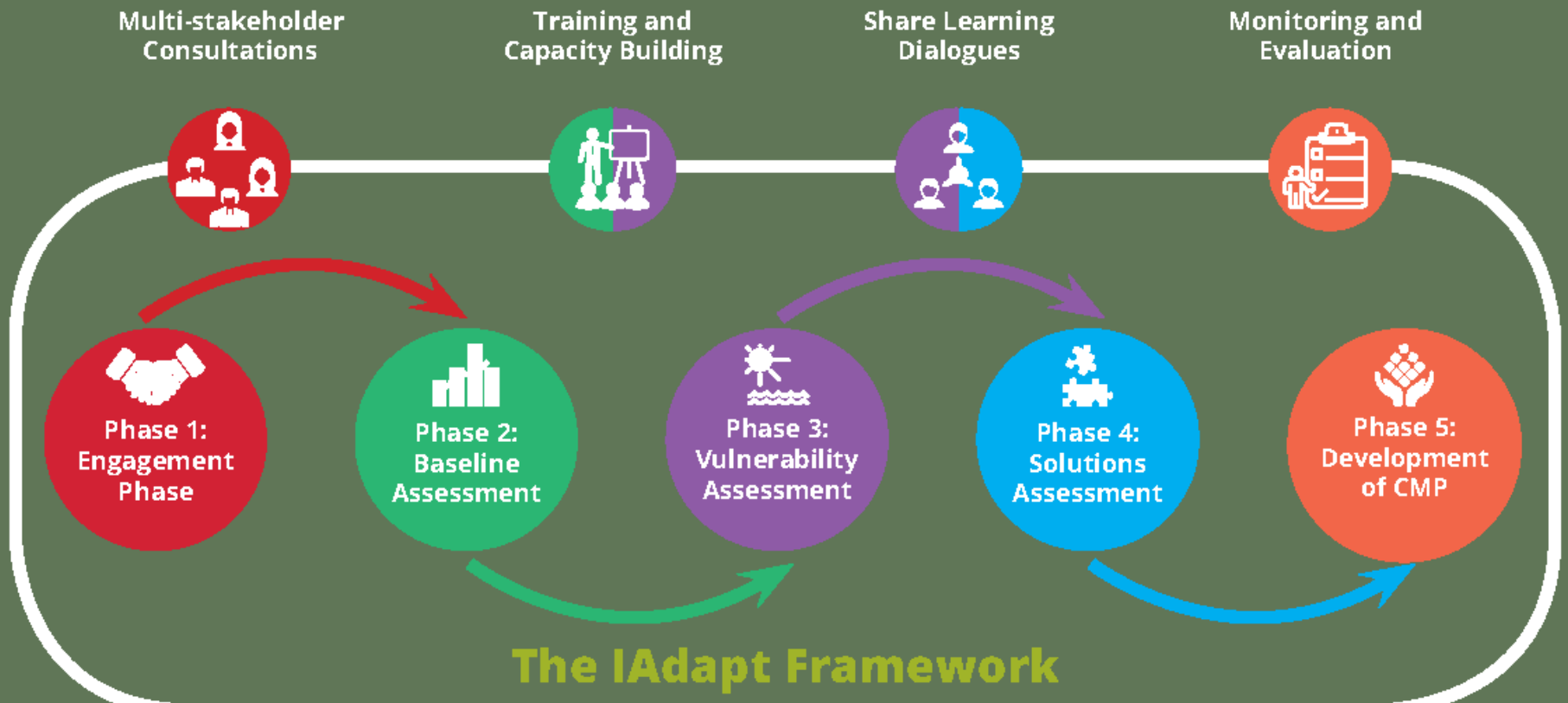
RURBAN Platform



- Multi stakeholder team
- Mobilizes rural and urban stakeholders
- Collaborative process to guide and support the implementation of climate adaptive water management

RURBAN Engagement in Solapur

RURBAN platform members can engage in different phases of the IAdapt Framework as shown below:



Way Forward in Solapur

- CMP preparation – identification of interventions of water resource management for rural and urban areas
- Presentation to RURBAN platform for ratification and incorporation in government plans
- Pilot intervention in Solapur
 - Bioremediation of drains flowing into Ekrukh lake
 - Constructed wetlands and DEWATS for a *nallah* (natural drain) in the city