

Resilient Cities 2019 Congress

Evolution of the ICLEI Resilient Development Pathway

Steve Gawler

THE FIVE ICLEI PATHWAYS



**LOW EMISSION
DEVELOPMENT**



**NATURE-BASED
DEVELOPMENT**



**EQUITABLE
AND PEOPLE-
CENTERED
DEVELOPMENT**



**RESILIENT
DEVELOPMENT**



**CIRCULAR
DEVELOPMENT**

The **FIVE ICLEI PATHWAYS** towards low emission, nature-based, equitable, resilient and circular development are designed to create **SYSTEMIC CHANGE**. The pathways are a framework for designing **INTEGRATED SOLUTIONS** that balance the patterns of human life and the built and natural environments.

RESILIENT DEVELOPMENT PATHWAY



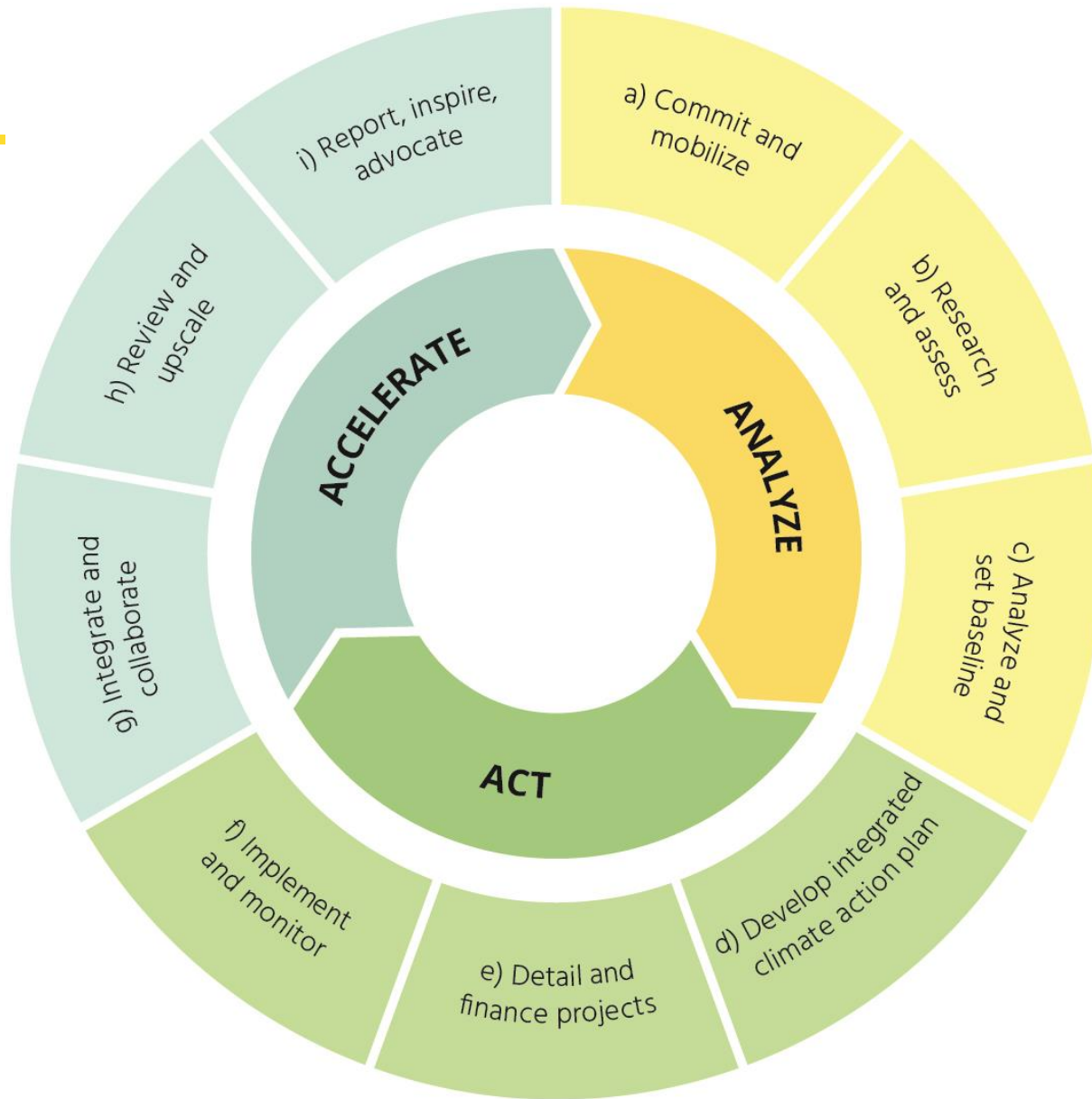
RESILIENT DEVELOPMENT

The resilient development pathway anticipates, prevents, absorbs and recovers from shocks and stresses, especially those brought about by rapid environmental technological, social and demographic change.

https://iclei.org/en/our_approach.html

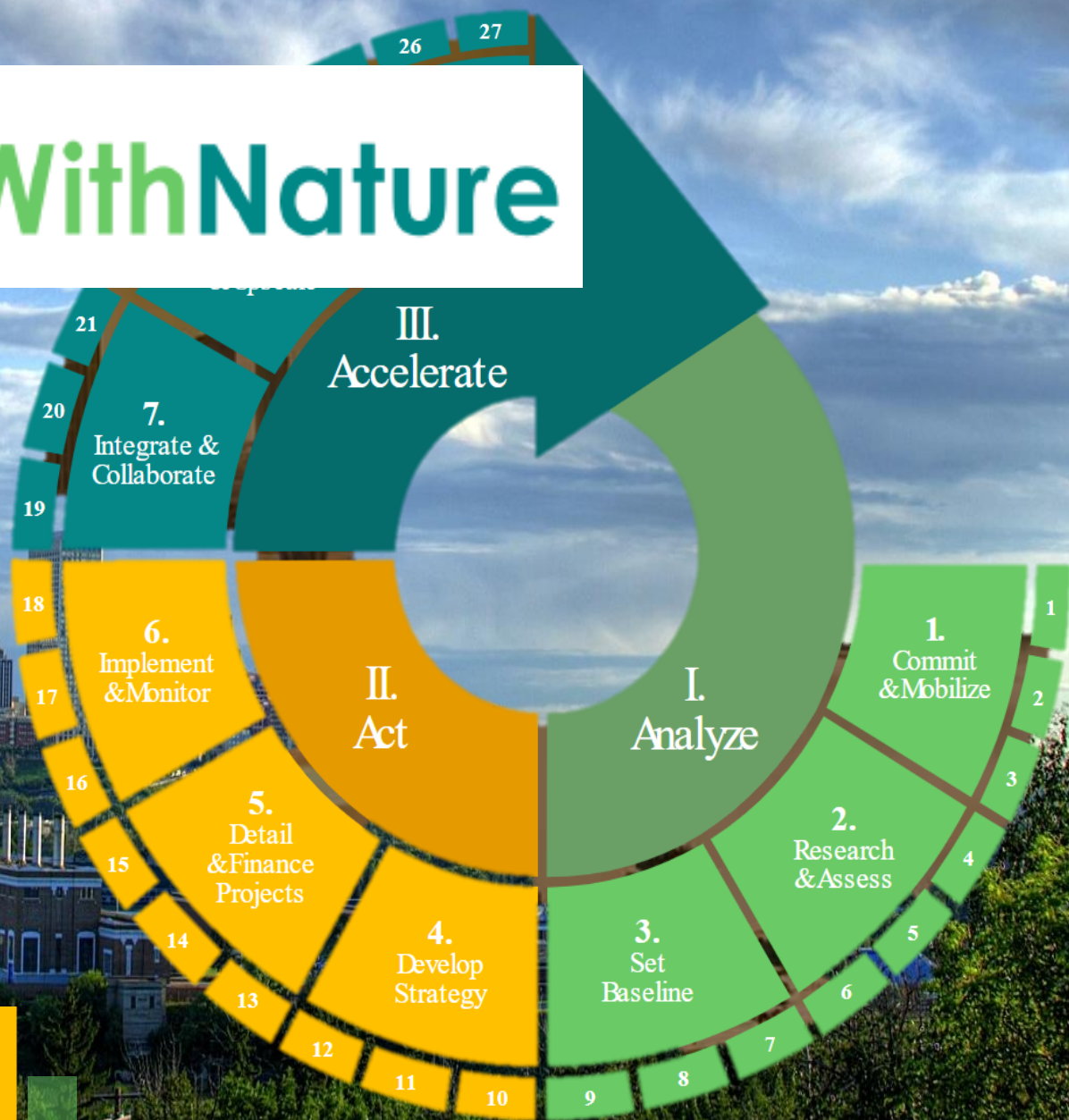
A Family of methodologies





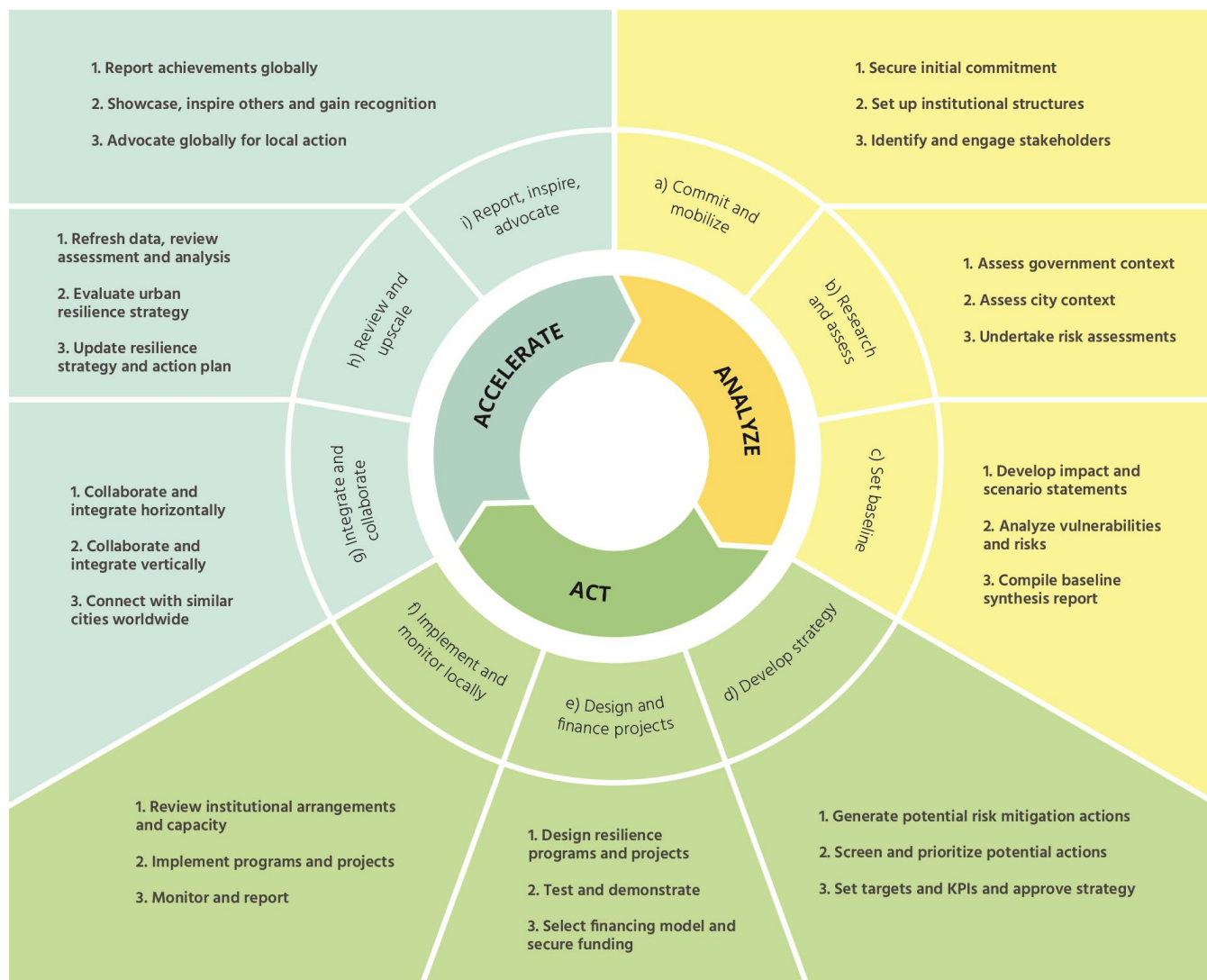


CitiesWithNature



Urban Resilience Planning Cycle

An ICLEI Methodology



Asian Cities Climate Change Resilience Network (ACCCRN)



Honiara City Council Disaster Risk Reduction Action Planning



ICLEI – GLISPA Front-Line Cities & Islands

**Supporting urban resilience building in
the towns and cities of small island
states**